

INSTALLATION

1. CONNECT UNIVERSAL JOINT NO. 2

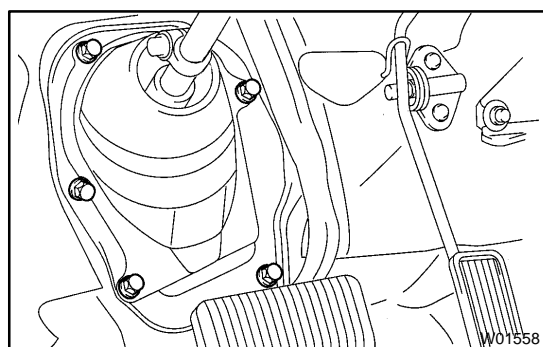
- Insert the column hole cover and column hole cover No. 2.
- Align the matchmarks on the column assembly and universal joint No. 2.
- Install the bolt.

Torque: 35 N·m (360 kgf-cm, 26 ft-lbf)

2. INSTALL STEERING COLUMN ASSEMBLY WITH UNIVERSAL JOINT NO. 2

- Install the steering column assembly with universal joint No. 2.
- Install the 4 steering column set nuts.
- Connect the connectors.

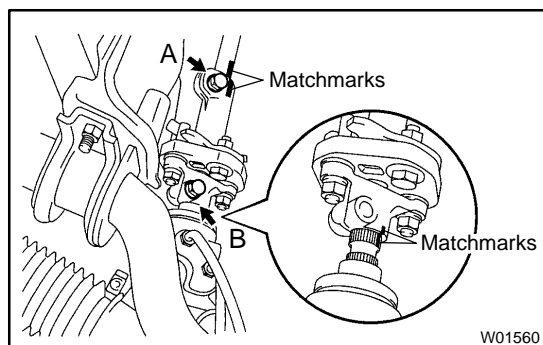
Torque: 26 N·m (260 kgf-cm, 19 ft-lbf)



3. INSTALL COLUMN HOLE COVER AND COLUMN HOLE COVER NO. 2

Install the column hole cover and column hole cover No. 2 to body with the 5 bolts.

Torque: 8.0 N·m (80 kgf-cm, 69 ft-lbf)



4. INSTALL INTERMEDIATE SHAFT NO. 2

- Align the matchmarks on the universal joint No. 2 and intermediate shaft No. 2.
- Align the matchmarks on the control valve shaft and intermediate shaft No. 2.
- Install the bolt "A" and "B".

Torque: 35 N·m (360 kgf-cm, 26 ft-lbf)

5. INSTALL BRAKE PEDAL RETURN SPRING

6. INSTALL SPIRAL CABLE (See page [BE-14](#))

7. INSTALL COMBINATION SWITCH WITH SPIRAL CABLE

- Install the combination switch with spiral cable with the 3 screws.
- Connect the airbag connector.
- Connect the 3 connectors.

8. INSTALL NO. 2 HEATER TO REGISTER DUCT

Install the No. 2 heater to register duct with the screw.

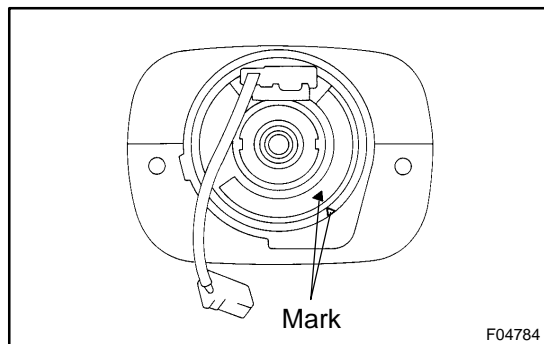
9. INSTALL STARTER SWITCH BEZEL

10. INSTALL LOWER LH FINISH PANEL

- (a) Install the lower LH finish panel with the 4 bolts.
- (b) Connect the fuel lid release lever with the 2 screws
- (c) Connect the hood lock release lever with the 2 screws.

11. INSTALL UPPER AND LOWER COLUMN COVERS

Install the upper and lower column covers with the 3 screws.

**12. CENTER SPIRAL CABLE**

- (a) Check that the front wheels are facing straight ahead.
- (b) Turn the spiral cable counterclockwise by hand until it becomes harder to turn.
- (c) Then rotate the spiral cable clockwise about 2.5 turns to align the mark.

HINT:

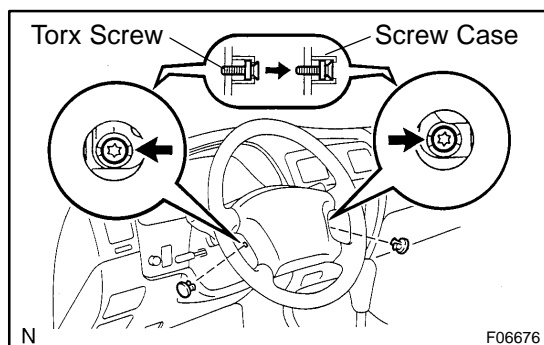
The spiral cable will rotate about 2.5 turns to either left or right of the center.

13. INSTALL STEERING WHEEL

- (a) Align the matchmarks on the steering wheel and main shaft.
- (b) Install the steering wheel set nut.
Torque: 50 N·m (510 kgf-cm, 37 ft-lbf)
- (c) Connect the connector.

14. INSTALL STEERING WHEEL PAD**NOTICE:**

- **Never use airbag parts from another vehicle. When replacing parts, replace with new ones.**
- **Make sure the wheel pad is installed to the specified torque.**
- **If the wheel pad has been dropped, or there are cracks, dents or other defects in the case or connector, replace the wheel pad with a new one.**
- **When installing the wheel pad, take care that the wirings do not interfere with other parts and are not pinched between other parts.**



- (a) Connect the airbag connector.
- (b) Install the wheel pad after confirming that the circumference groove of the torx screw is caught on the screw case.
- (c) Using a torx socket wrench, torque the 2 screws.
Torque: 8.8 N·m (90 kgf-cm, 78 in.-lbf)
- (d) Install the 2 steering wheel lower No. 2 covers.

15. CHECK STEERING WHEEL CENTER POINT